





We are a group of companies
with experienced and creative
professionals



Kasikorn Bank Head Office (1996)
Rat Burana, Bangkok



“Nature Always Wins”

Chuchawal Pringpuangkeo
Founder

A large, mature tree with thick, gnarled roots and dense green foliage. The roots spread out across the ground, which is covered in dry leaves. In the background, a body of water is visible under a clear sky.

“Inspire, Innovate, Integrate”

“Where, When, and For Whom”

“Interior Speaks Out For Exterior”



We have projects in
20+ countries

Suvarnabhumi Airport Satellite Terminal 1 (Under Development, In Collaboration with HOK and NACO)
Samut Prakan, Thailand



Aviation & Transportation

Convention Centers

Data Centers

Education

Expo & Exhibition Pavilions

Government

Healthcare

Hospitality

We have projects in
14+ sectors

Industrial

Master Plans & Urban Design

Mixed-use Developments

Office & Workplace

Residential

Retail Centers

As architects
planners
interior designers
project managers

we are constantly
pushing the boundaries

We believe that
**nature is the purest form of inspiration
that can drive greater symbiosis**
between man and his environment

We believe that
every project should be

Contextually-relevant

and
**inspire people to
coexist seamlessly**
with their surroundings

28 Chidlom (2019, In Collaboration with KPF)
Pathum Wan, Bangkok

We design

**Spaces
that enhance
the user experience**

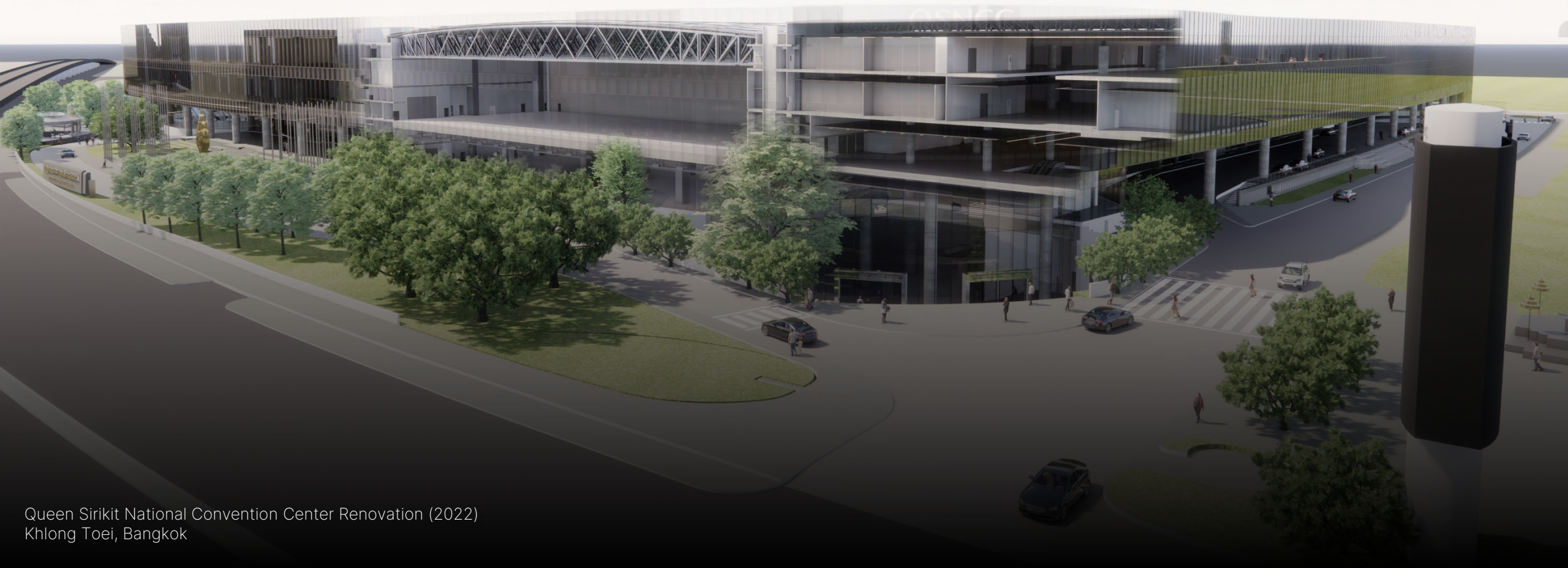
while making cost-conscious
recommendations

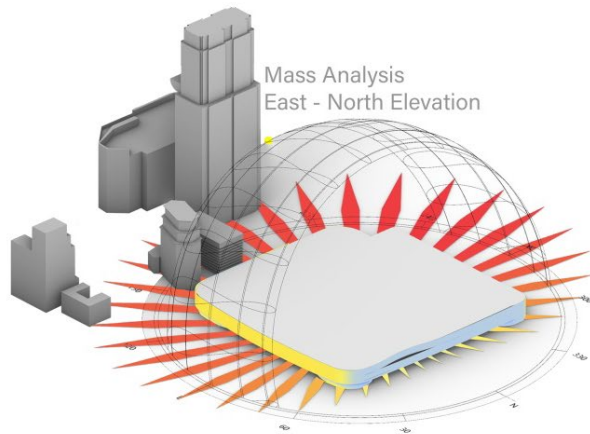




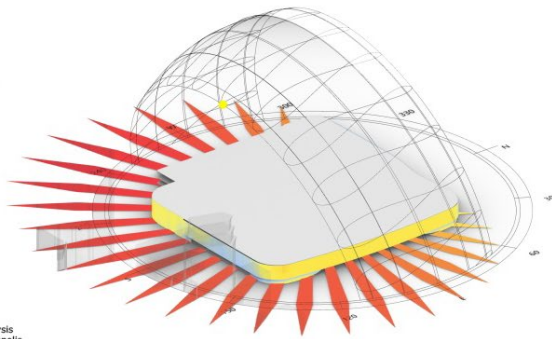
We arrive at each
design iteration using

**data-driven and
parametric-based workflows**

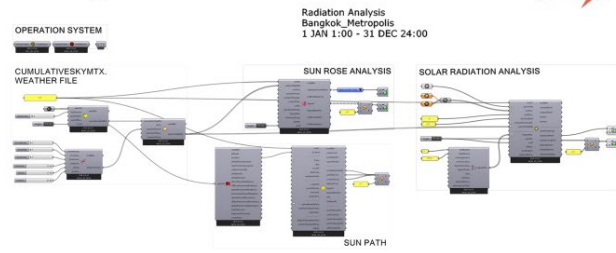




Mass Analysis
East - North Elevation

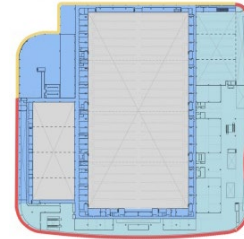


Mass Analysis
South - East Elevation



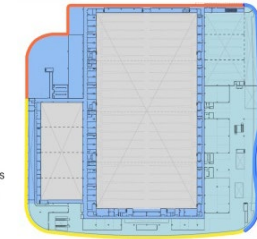
Radiation Analysis
Bangkok_Metropolis
1 JAN 1:00 - 31 DEC 24:00

Daylight needs for Interior



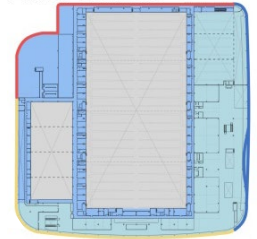
DAYLIGHT NEEDS
MORE
LESS

Solar load

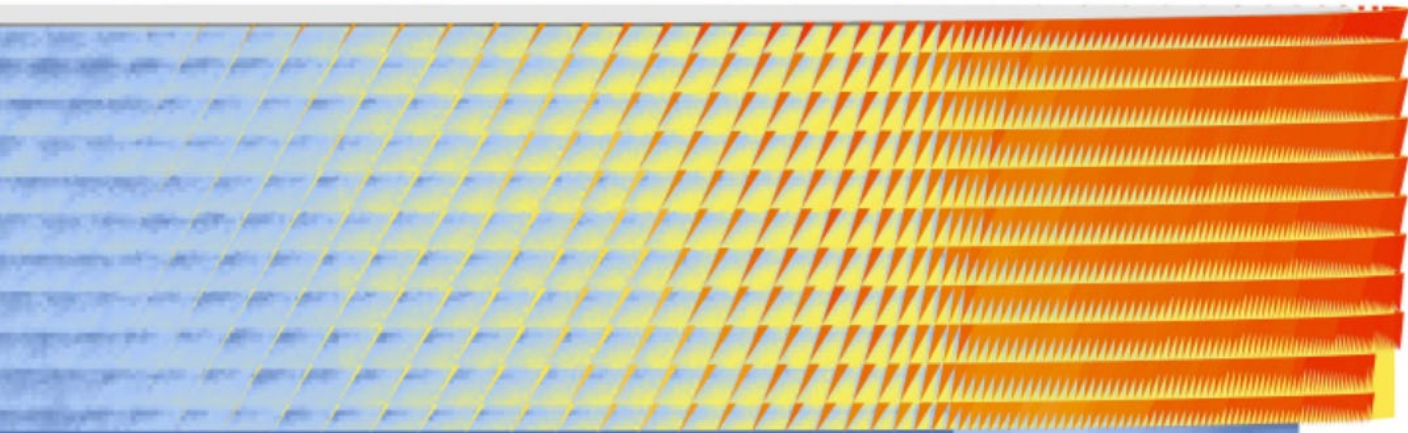


SOLAR LOAD
MORE
LESS

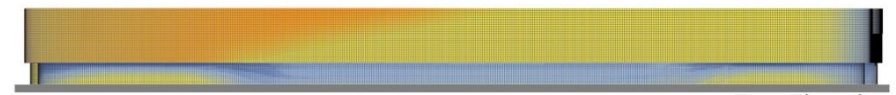
Facade Treatment



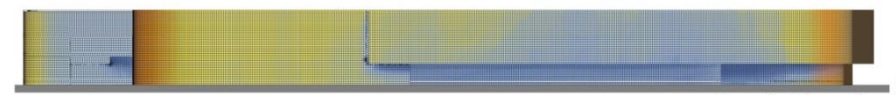
SOLID FACADE
CURTAIN WALL
CURTAIN WALL WITH FIN



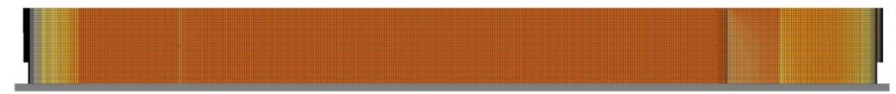
North Elevation



East Elevation



South Elevation



West Elevation

kWh/m2
1500.00+
1350.00
1200.00
1050.00
900.00
750.00
600.00
450.00
300.00
150.00
<0.00

Building Performance Analyses

We work with all stakeholders
and consultants using

**an interdisciplinary approach
and integrative principles**


Four Seasons Hotel Bangkok at Chao Phraya River
(2021, In Collaboration with Denniston and Hamiltons International)
Sathon, Bangkok

to ensure our
designs are of

**a collective high-quality
standard and delivered
in a timely manner**

Architectural Excellence World-Class Designers

KPF Foster + Partners SOM Gehl

 **Mitsubishi Jisho Design**

 **SCENO PLUS**

 **ODPA**

TANGE
丹下都市建築設計

 **HBA**
HIRSCH BECKER ASSOCIATES

**BOIFFILS
ARCHITECTURE**
PARIS/BANGKOK

 **h+k**

 **CHANGI**
airport group

**schmidt/hammer/
lassen/
architects/**

 **ASM
GLOBAL**

lead8

RDG

 **NACO**
a company of Royal NakhonSi Thammarat

 **YAMASHITA
SEKKEI INC.**

BENOY

hamiltons international

DENNISTON

 **au workshop**
ARCHITECTS+URBANISTS

A photograph of a modern, curved glass building at night, illuminated from within. The building's facade is a grid of glass panels, and the interior lights create a warm glow. The building is set against a dark blue sky with some clouds. In the foreground, there is a wet, reflective surface, possibly a pool or a wet plaza, which mirrors the building and the sky. To the left, there are some trees and a sidewalk. To the right, there are some streetlights and a small sign. The overall atmosphere is serene and modern.

2022

“Pride of the Nation”

A night-time photograph of the Thailand Pavilion at the World Expo 2020 in Dubai. The pavilion's most striking feature is its large, curved roof, which is covered in a dense grid of illuminated, five-petaled flower-shaped light fixtures. These lights are arranged in a color gradient, transitioning from warm orange and yellow in the center to vibrant pink and purple towards the edges. To the left, a dark, textured wall features a large, glowing golden crown-like ornament and the text 'THAILAND' in English and Thai script. In the background, a large digital screen displays a colorful Thai mural and performance times: 'PERFORMANCE 8.00 PM' and '9.00 PM'. The overall scene is illuminated by the pavilion's lights and the ambient night lighting of the expo grounds.

We strive
to create inspiring designs
that respect environmental sustainability
and generate worldly impacts

as we believe that these
designs are essential in building

**the next generation of built environments
and cities that are one with nature.**



A LOOK INTO

THE FUTURE

SUSTAINABILITY

NATURE DRIVEN



DATA

TECHNOLOGY DRIVEN

RESILIENCE

PREPARATION & MANAGEMENT

DATA

MORE EFFICIENT BUILDINGS

HOLISTICALLY SOUND



MORE INFORMED PEOPLE

ALL ROUNDED

MORE RESPONSIVE CITIES

SEAMLESSLY CONNECTED



RESILIENCE

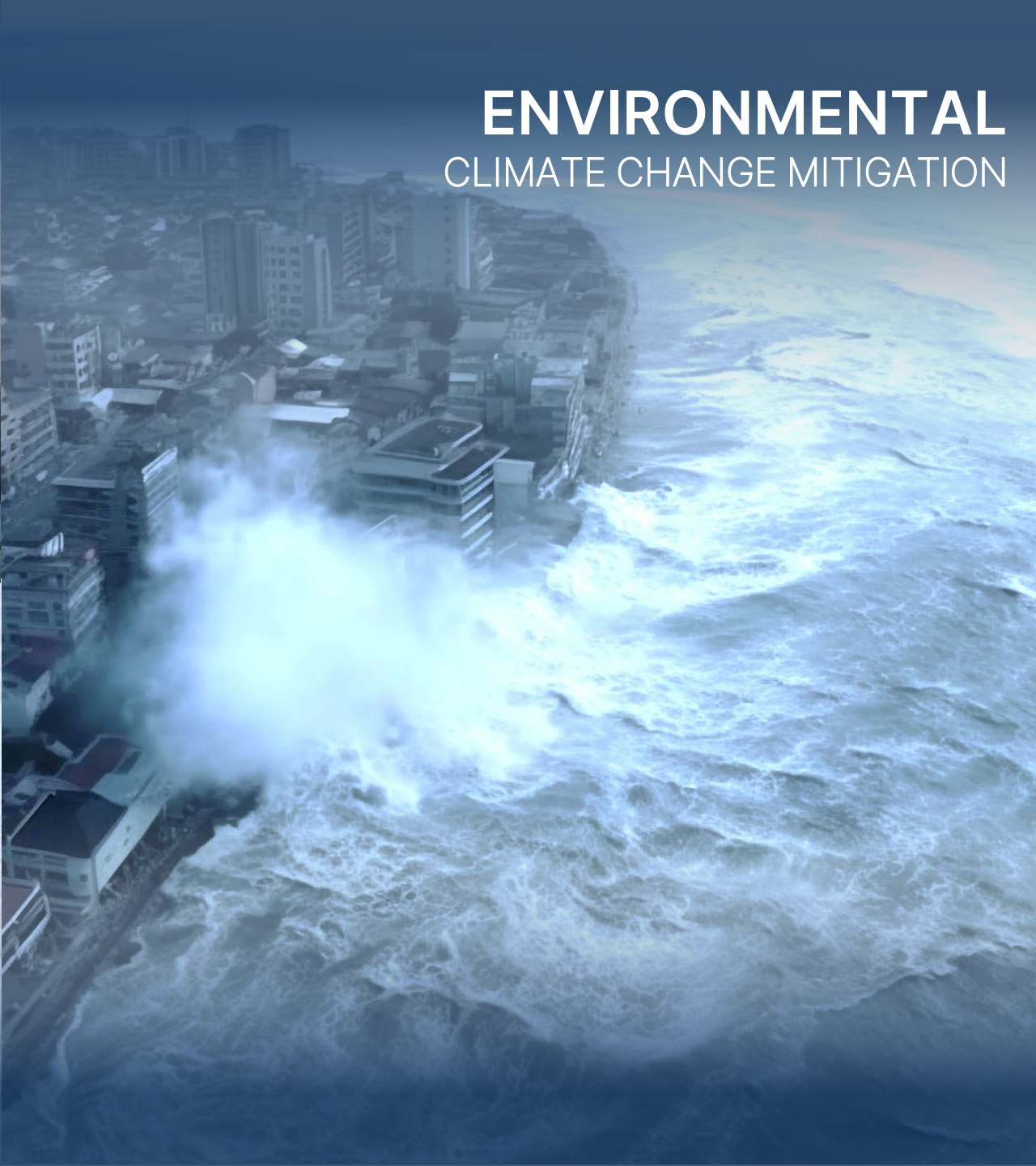
SOCIO-ECONOMIC

COMMUNITIES AND SPACES



ENVIRONMENTAL

CLIMATE CHANGE MITIGATION



PERSONAL

PHYSICAL & MENTAL STABILITY



SUSTAINABILITY

ENERGY OPTIMIZATION

OPTIMIZE ENERGY USE AND CONSUMPTION



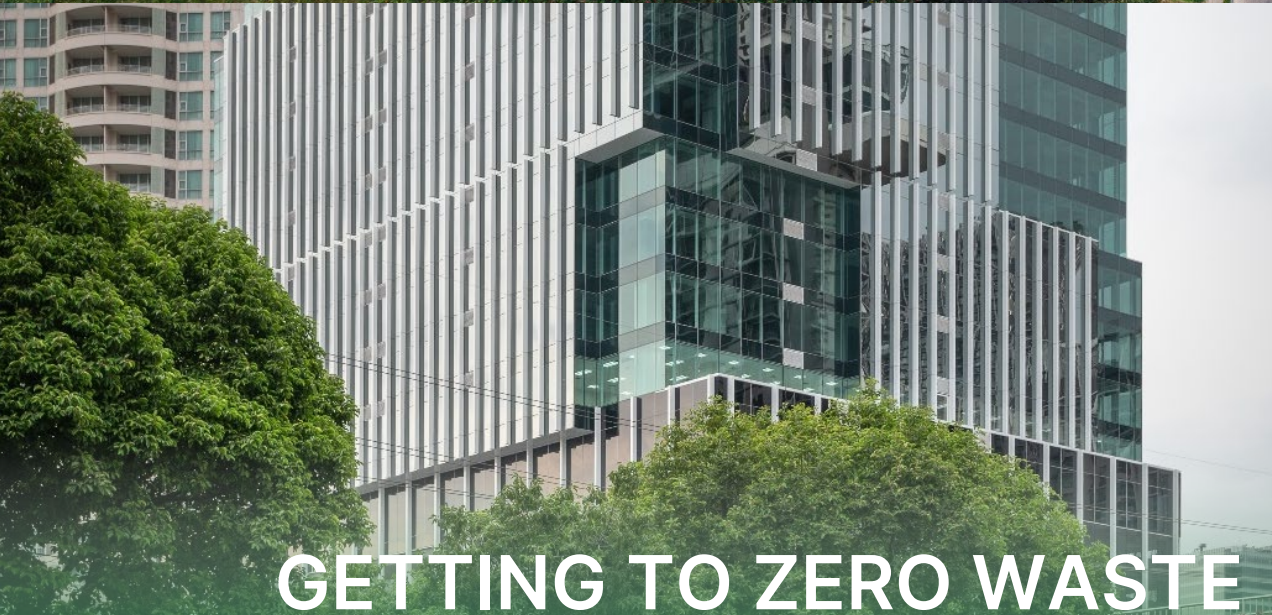
CYCLICAL WATER HARVESTING

COLLECT, FILTER, USE, RECYCLE, REUSE WATER



CLIMATE POSITIVE

REMOVE CARBON DIOXIDE FROM THE ATMOSPHERE



GETTING TO ZERO WASTE

REDUCE WASTE TO LANDFILL

PERFORMANCE TOOLS

SUSTAINABILITY

NATURE DRIVEN



DATA

TECHNOLOGY DRIVEN

RESILIENCE

PREPARATION & MANAGEMENT



BUILDINGS



PEOPLE



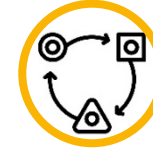
PLANET

PERFORMANCE METRICS



USER-CENTERED DESIGN

- USER EXPERIENCE
- SPECIFIC NEEDS OF EACH INDIVIDUAL
- CUSTOMIZATION



ADAPTIVE DESIGN

- FLEXIBILITY & AGILITY
- SEAMLESS DESIGN
- HYBRID SPACES



SMART DESIGN

- OPTIMIZED EXPERIENCE
- SENSORY-LED DESIGN
- DATA INTELLIGENCE



WELL-BEING DESIGN

- HEALTHY LIFESTYLE
- SUSTAINABILITY
- WELL-BEING FOR ALL STAKEHOLDERS



INDIVIDUAL

USER-CENTERED DESIGN



COMMUNITY

ADAPTIVE DESIGN



SPACES

WELL-BEING DESIGN



CONNECTIVITY

SMART DESIGN



A LOOK INTO
OUR APPROACH





Sustainability

- Semi-outdoor collaboration spaces
- High-performance glazing
- Clean energy provisions



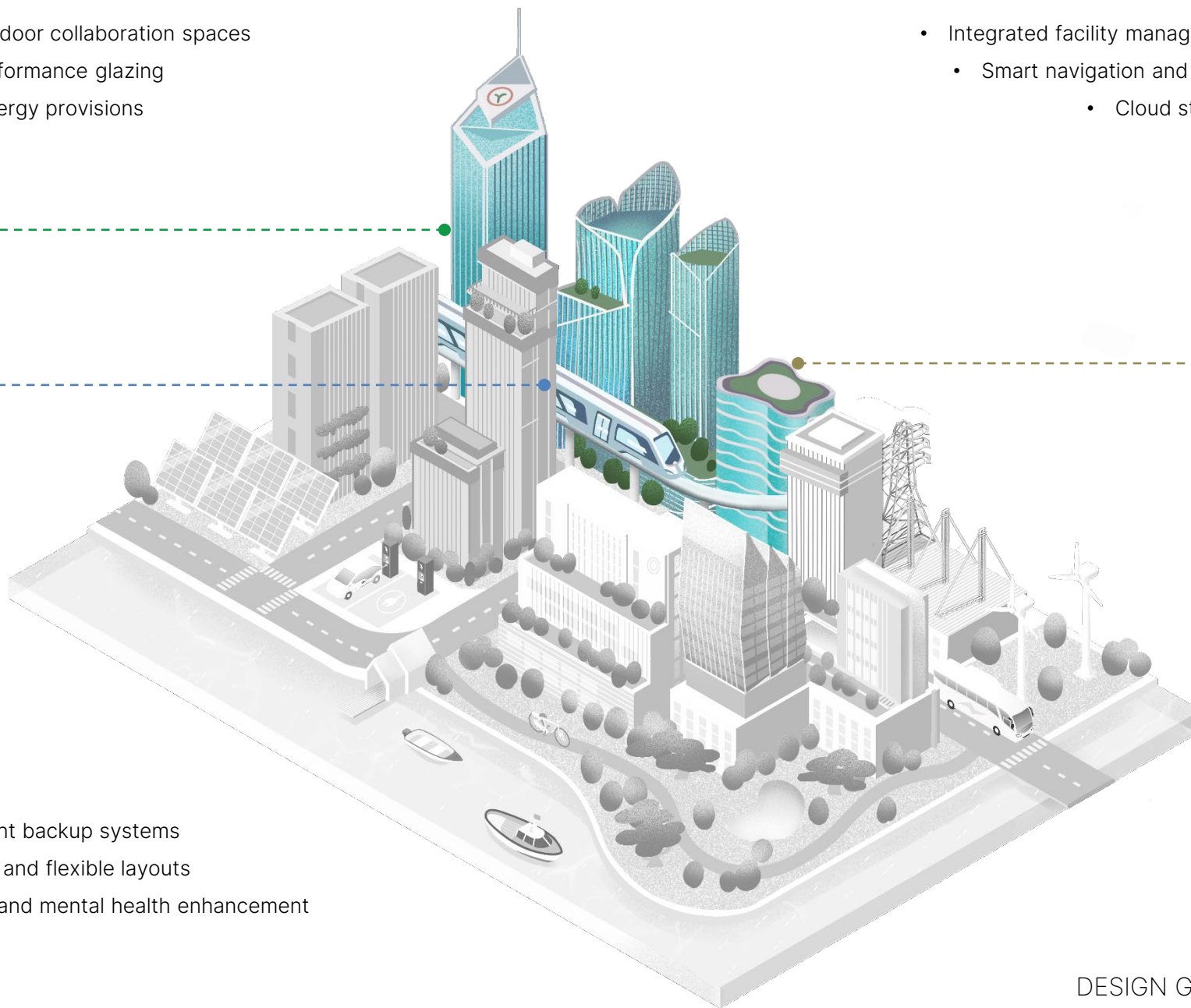
Data

- Integrated facility management
 - Smart navigation and traffic
 - Cloud storage



Resilience

- Redundant backup systems
- Adaptive and flexible layouts
- Physical and mental health enhancement





- Breathable façades
- Shared amenity spaces
- Urban farming provisions

Sustainability



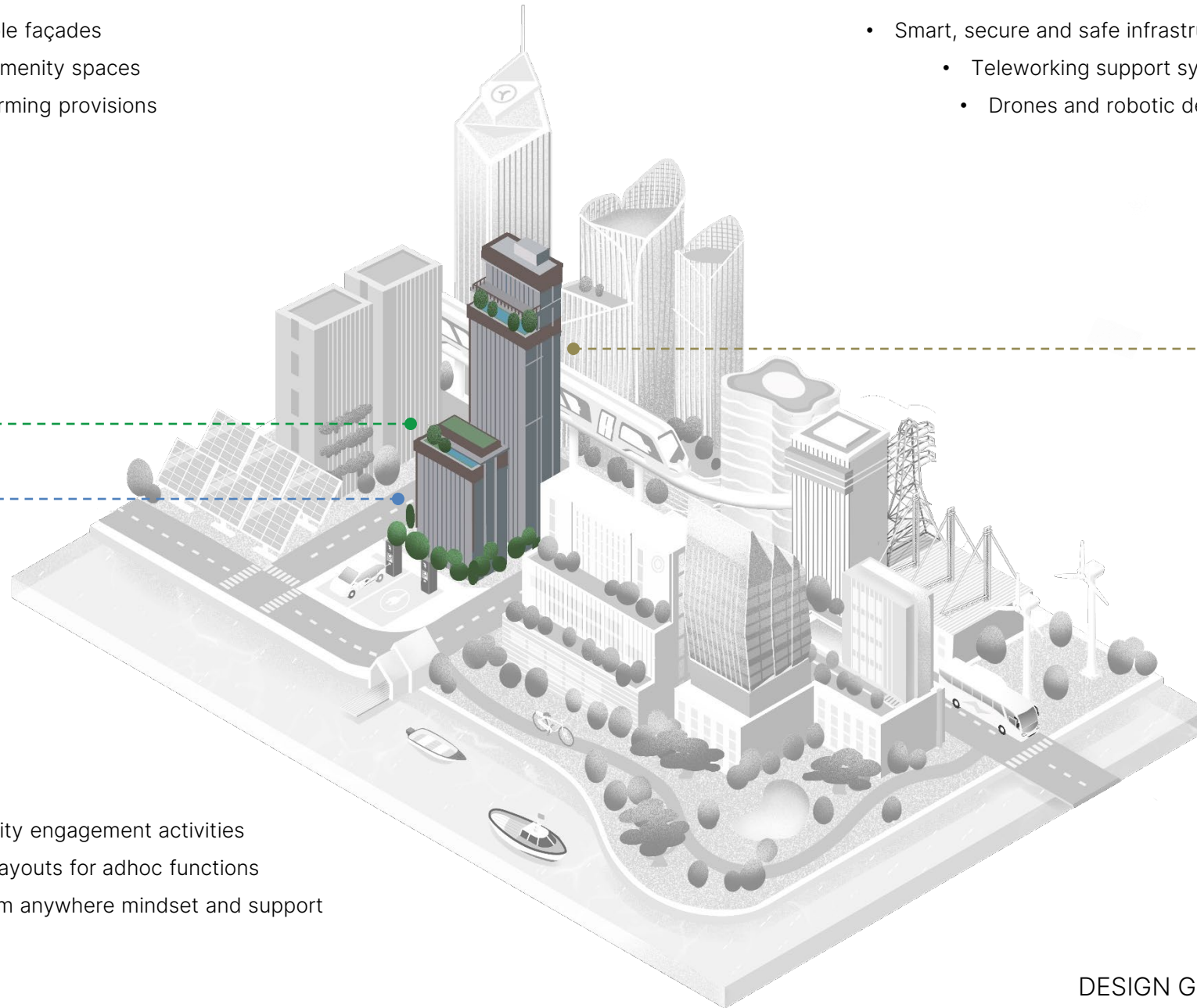
- Smart, secure and safe infrastructure
 - Teleworking support systems
 - Drones and robotic delivery

Data



- Community engagement activities
- Flexible layouts for adhoc functions
- Work from anywhere mindset and support

Resilience



RESIDENTIAL

DESIGN GUIDELINES FOR INVESTORS



Sustainability

- Connection to nature and place
- Eco-branded materials with EPDs
- Robust waste and water management



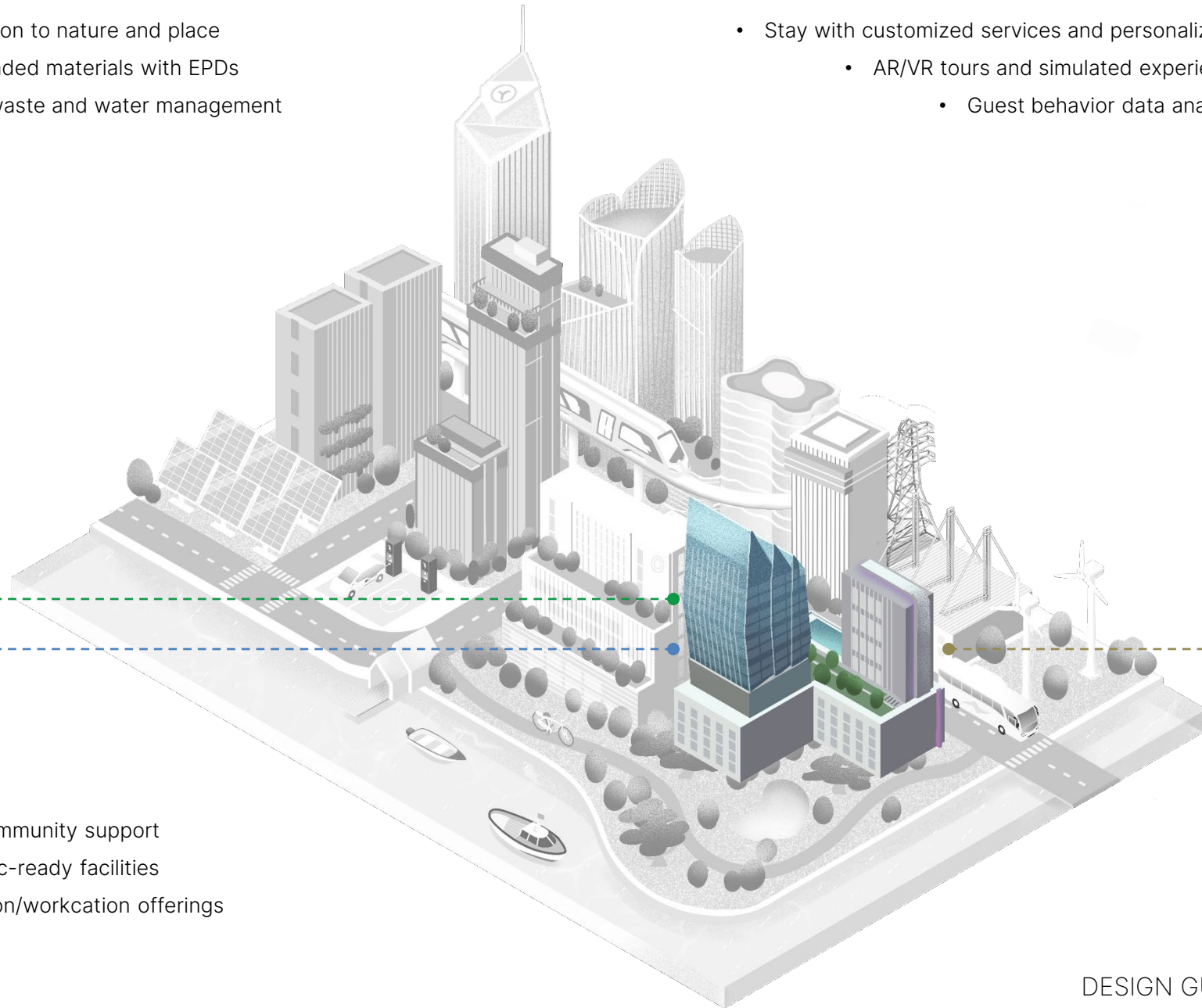
Data

- Stay with customized services and personalization
 - AR/VR tours and simulated experiences
 - Guest behavior data analytics



Resilience

- Local community support
- Pandemic-ready facilities
- Staycation/workcation offerings



HOSPITALITY

DESIGN GUIDELINES FOR INVESTORS



Sustainability

- Places of respite for patients and staff
- Direct access to outdoor gardens and terraces
- Enhanced acoustic performance and provisions

- Automated and contactless systems
 - Telehealth medical services
 - Wearables integration

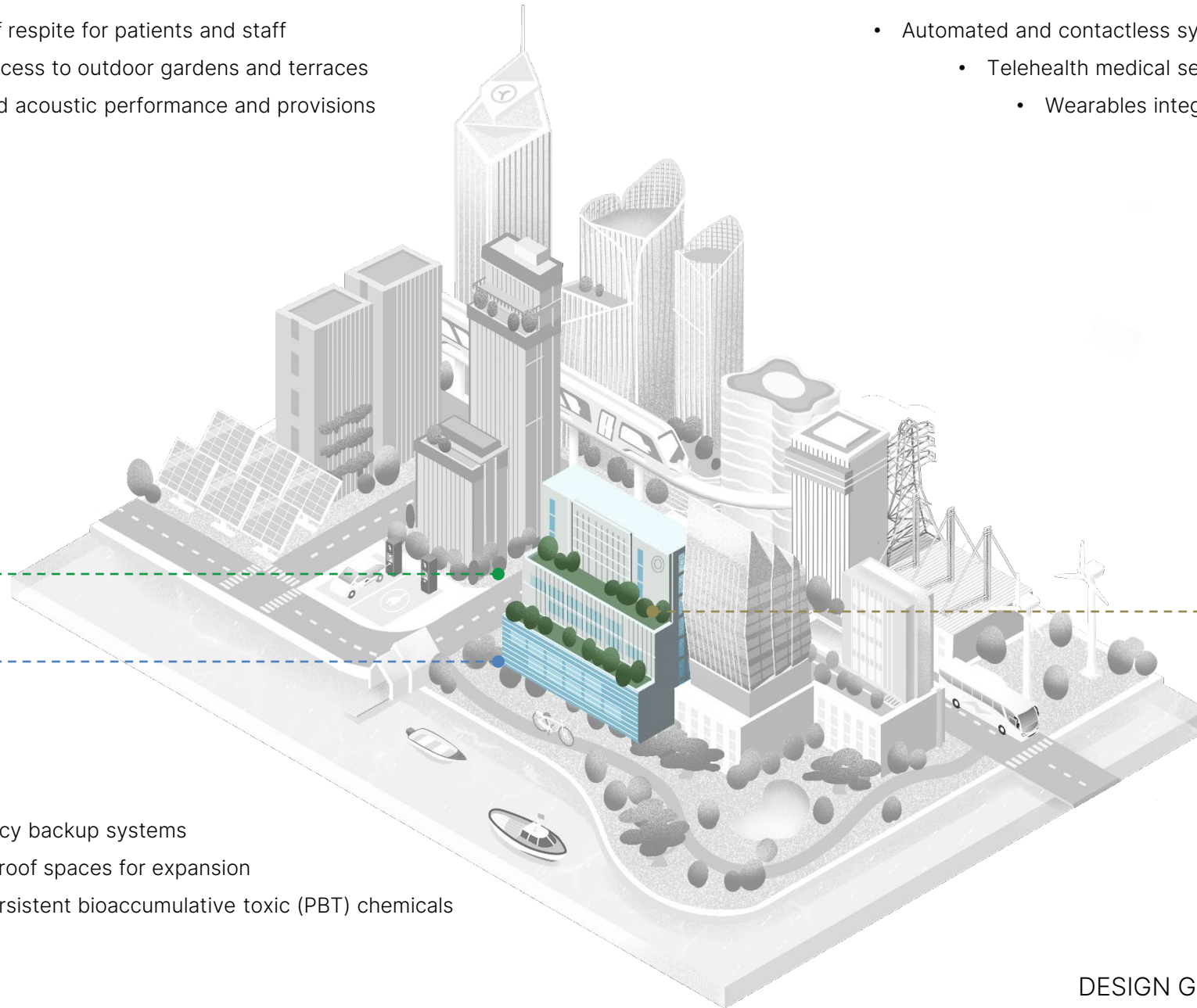


Data



Resilience

- Emergency backup systems
- Future-proof spaces for expansion
- Avoid persistent bioaccumulative toxic (PBT) chemicals



HEALTHCARE

DESIGN GUIDELINES FOR INVESTORS



Sustainability



Resilience

ENERGY OPTIMIZATION

OPTIMIZE ENERGY USE AND CONSUMPTION

CLIMATE POSITIVE

REMOVE CARBON DIOXIDE FROM THE ATMOSPHERE

CYCLICAL WATER HARVESTING

COLLECT, FILTER, USE, RECYCLE, REUSE WATER

GETTING TO ZERO WASTE

REDUCE WASTE TO LANDFILL

MORE EFFICIENT BUILDINGS

HOLISTICALLY SOUND

MORE INFORMED PEOPLE

ALL ROUNDED

MORE RESPONSIVE CITIES

SEAMLESSLY CONNECTED



Data



THE DELIGHTFUL & WISE CITY

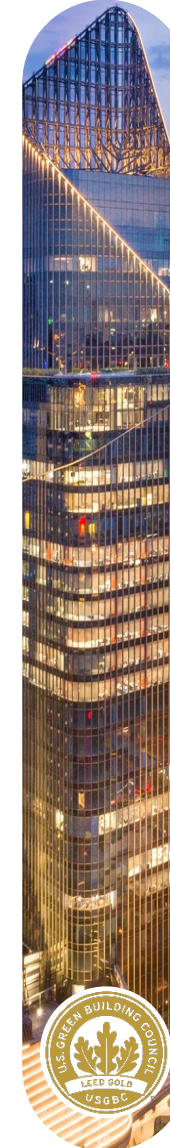
THE PLACE TO WORK, LIVE, STAY, AND GROW



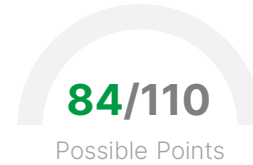
With our
Sustainability Expertise

We create
Tangible Impacts

Certified by
**Leadership in Energy and
Environmental Design (LEED)**



Kasikorn Business Technology Group



Certification Award:

LEED v3 Certified PLATINUM
In New Construction Category

Top
3%
of all LEED v3
Global activities

Green Building Design Achievement:

- 36** % improvement on baseline building performance rating
- 7** % onsite renewable energy
- 20** % recycled content and regional building materials
- 75** % existing building structure and envelope reuse
- 40** % reduction in baseline indoor water use
- 90** % of occupied space has quality views



SCG 100th Year Building



85/110

Possible Points

Certification Award:

LEED v3 Certified PLATINUM

In Core and Shell Category

Top

4%

of all LEED v3
Global activities

Green Building Design Achievement:

30 % improvement on baseline building performance rating

1 % onsite renewable energy (4 out of 4 credits)

35 % green power purchase

20 % recycled content and regional building materials

50 % FSC-certified wood products

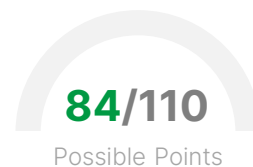
40 % reduction in baseline indoor water use

90 % of occupied space has quality views





SCG Head Office Building 1 and 2



Certification Award:

LEED v3 Certified PLATINUM

In Existing Building Category

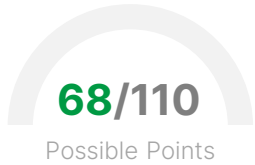
Top
4%
of all LEED v3
Global activities

Green Building Design Achievement:

- ✓ 95 Energy Star Performance Rating
- 80 % of total energy consumption is system-level metered
- 60 % sustainable purchasing of ongoing consumables
- 50 % of occupied space has daylighting and quality views
- 80 % reduction in indoor potable water use
- ✓ 'Exceptional' (14 out of 14 Possible LEED credits) in Water Efficiency



Singha Complex



Certification Award:

LEED v3 Certified GOLD

In Core and Shell Category

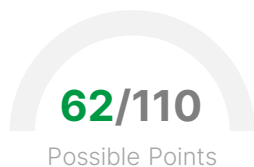
Top
24%
of all LEED v3
Global activities

Green Building Design Achievement:

- 28 % improvement on baseline building performance rating
- 20 % recycled content and regional building materials
- 20 % regionally extracted, harvested, recovered, or manufactured materials
- 40 % reduction in baseline indoor water use
- 50 % FSC-certified wood products
- ✓ focusing on load reduction and HVAC-related strategies



PTT Operation Center (Tier IV)



Certification Award:

LEED v3 Certified GOLD

In New Construction Category

Top
41%
of all LEED v3
Global activities

Green Building Design Achievement:

- 16 % Improvement in energy cost-saving performance from the baseline
- 1 % onsite renewable energy
- 20 % recycled content building materials
- 90 % of occupied space has daylighting and quality views
- 40 % reduction in baseline indoor water use
- 80 'Exceptional' (14 out of 14 Possible LEED credits) in Water Efficiency
- ✓ Provide controllability of the lighting system for each individual task



We are dedicated to enhancing the
quality of life
through our FITWEL projects

APAC Tower (2023)
Watthana, Bangkok

FITWEL 3-Stars rating (pending review process)




promoting both physical and
mental well-being through
health-oriented features

One City Center (2023)
Pathum Wan, Bangkok

2-Stars FITWEL Certified



A large, modern glass building with a curved facade, illuminated from within, stands against a twilight sky. A large tree is in the foreground on the left, and the building's name "QSNCC" is visible on its upper right side.

We believe in building a lasting future that
is embedded with the commitment towards
a net-zero world.

Embrace this future with us, today.

“We **integrate innovative** designs to **inspire** you”

