





We are a group of companies  
**with experienced and creative**  
professionals



Kasikorn Bank Head Office (1996)  
Rat Burana, Bangkok

We have projects in  
**20+ countries**

Suvarnabhumi Airport Satellite Terminal 1 (Under Development, In Collaboration with HOK and NACO)  
Samut Prakan, Thailand



**Aviation & Transportation**

**Convention Centers**

**Data Centers**

**Education**

**Expo & Exhibition Pavilions**

**Government**

**Healthcare**

**Hospitality**

We have projects in  
**14+ sectors**

**Industrial**

**Master Plans & Urban Design**

**Mixed-use Developments**

**Office & Workplace**

**Residential**

**Retail Centers**

As architects  
planners  
interior designers  
project managers

we are constantly  
pushing the boundaries

We believe that  
**nature is the purest form of inspiration  
that can drive greater symbiosis**  
between man and his environment

We believe that  
every project should be

**Contextually-relevant**

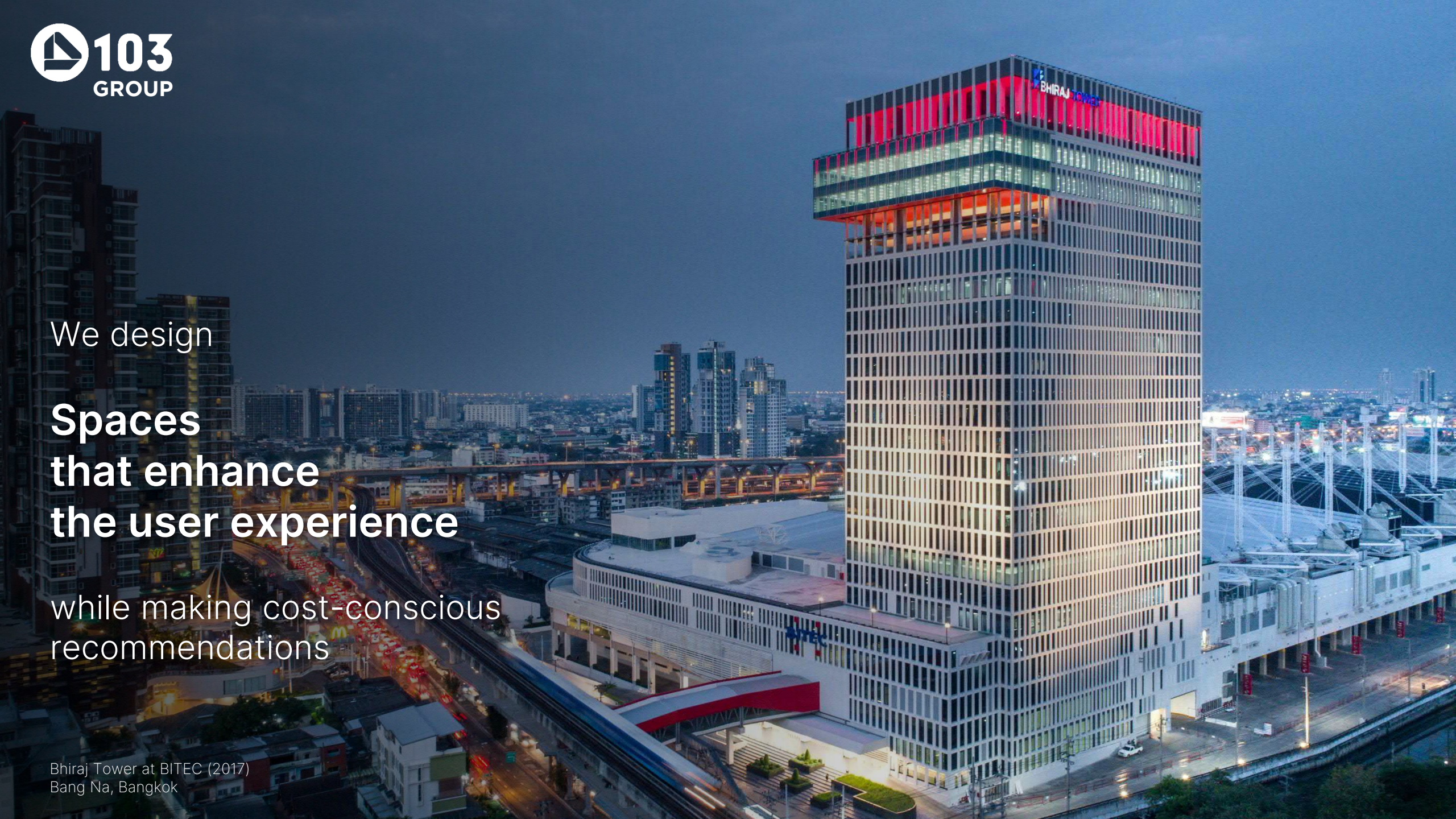
and  
**inspire people to  
coexist seamlessly**  
with their surroundings

28 Chidlom (2019, In Collaboration with KPF)  
Pathum Wan, Bangkok

We design

**Spaces  
that enhance  
the user experience**

while making cost-conscious  
recommendations



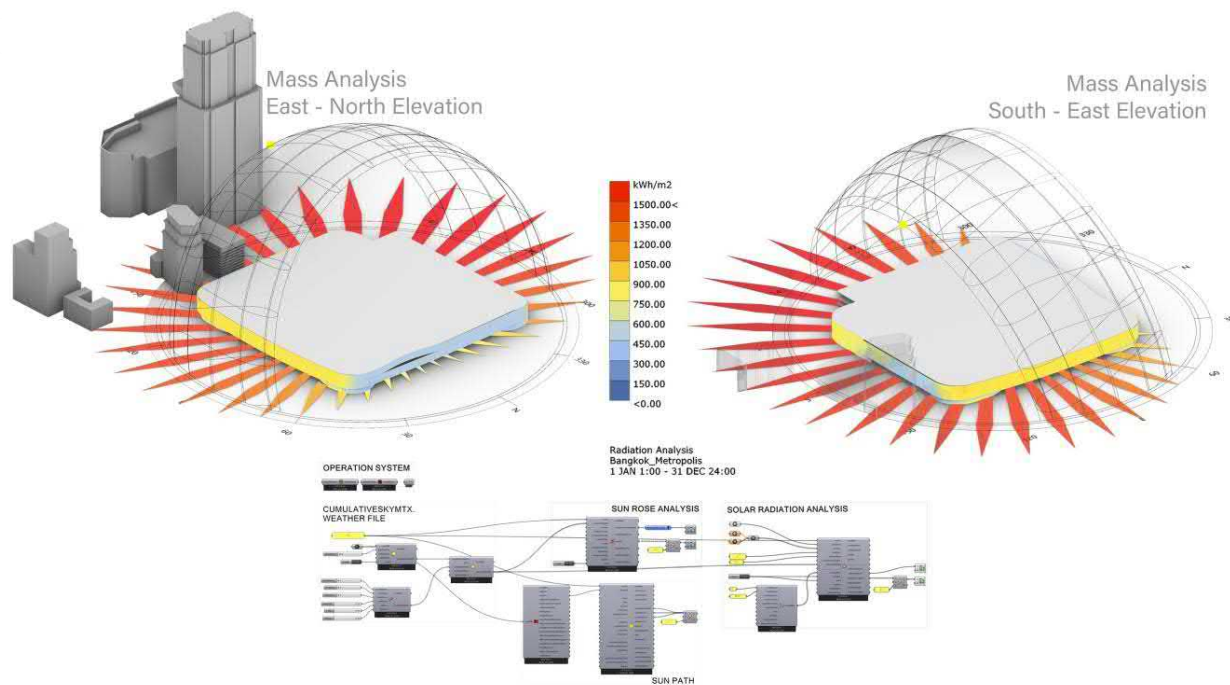


We arrive at each  
design iteration using

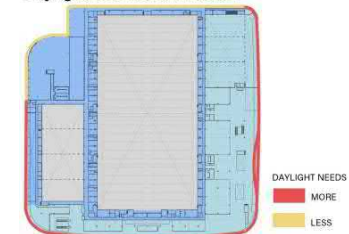
**data-driven and  
parametric-based workflows**



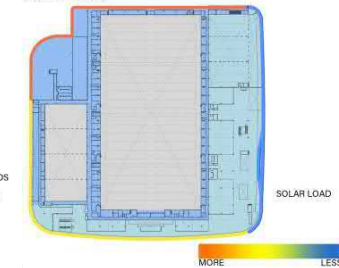
Queen Sirikit National Convention Center Renovation (2022)  
Klong Toei, Bangkok



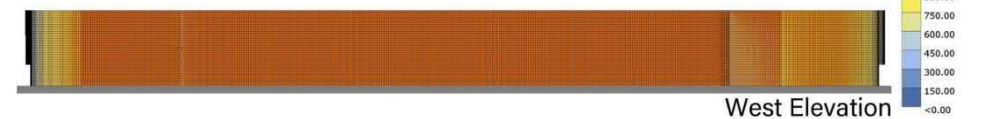
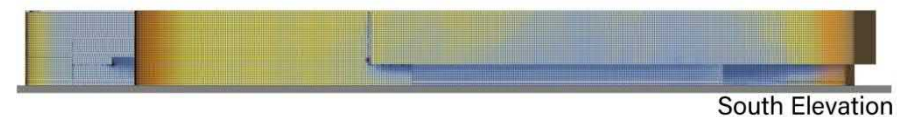
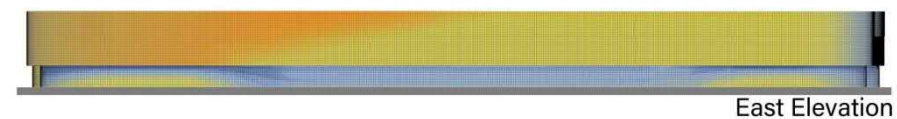
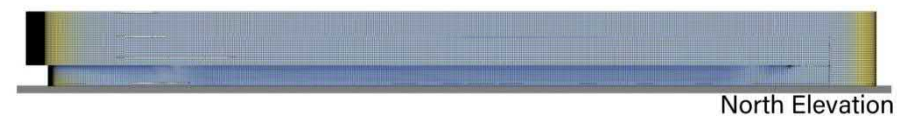
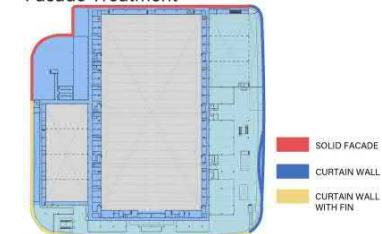
Daylight needs for Interior



Solar load



Facade Treatment



# Building Performance Analyses

We work with all stakeholders  
and consultants using

**an interdisciplinary approach  
and integrative principles**

Four Seasons Hotel Bangkok at Chao Phraya River  
(2021, In Collaboration with Denniston and Hamiltons International)  
Sathon, Bangkok

to ensure our  
designs are of

**a collective high-quality  
standard and delivered  
in a timely manner**

# Architectural Excellence World-Class Partners

**KPF Foster + Partners SOM Gehl** 

 Mitsubishi Jisho Design  SCENO PLUS  ODPA  TANGE  
丹下都市建築設計

 HBA  BOIFFILS ARCHITECTURE  
HIRSCH BEDNER ASSOCIATES PARIS/BANGKOK  CL3  CHANGI airport group  schmidt/hammer/lassen/architects

 ASM GLOBAL  lead8  RDG  NACO  YAMASHITA SEKKEI INC.  BENOY

 hamiltons international  DENNISTON  au|workshop  
ARCHITECTS-UPANISTI



A LOOK INTO

**THE FUTURE**

## PERFORMANCE TOOLS

**SUSTAINABLE**

NATURE DRIVEN



**INTELLIGENT**

TECHNOLOGY DRIVEN

**RESILIENT**

PREPARATION & MANAGEMENT



INTELLIGENT  
**BUILDINGS**



**PEOPLE**



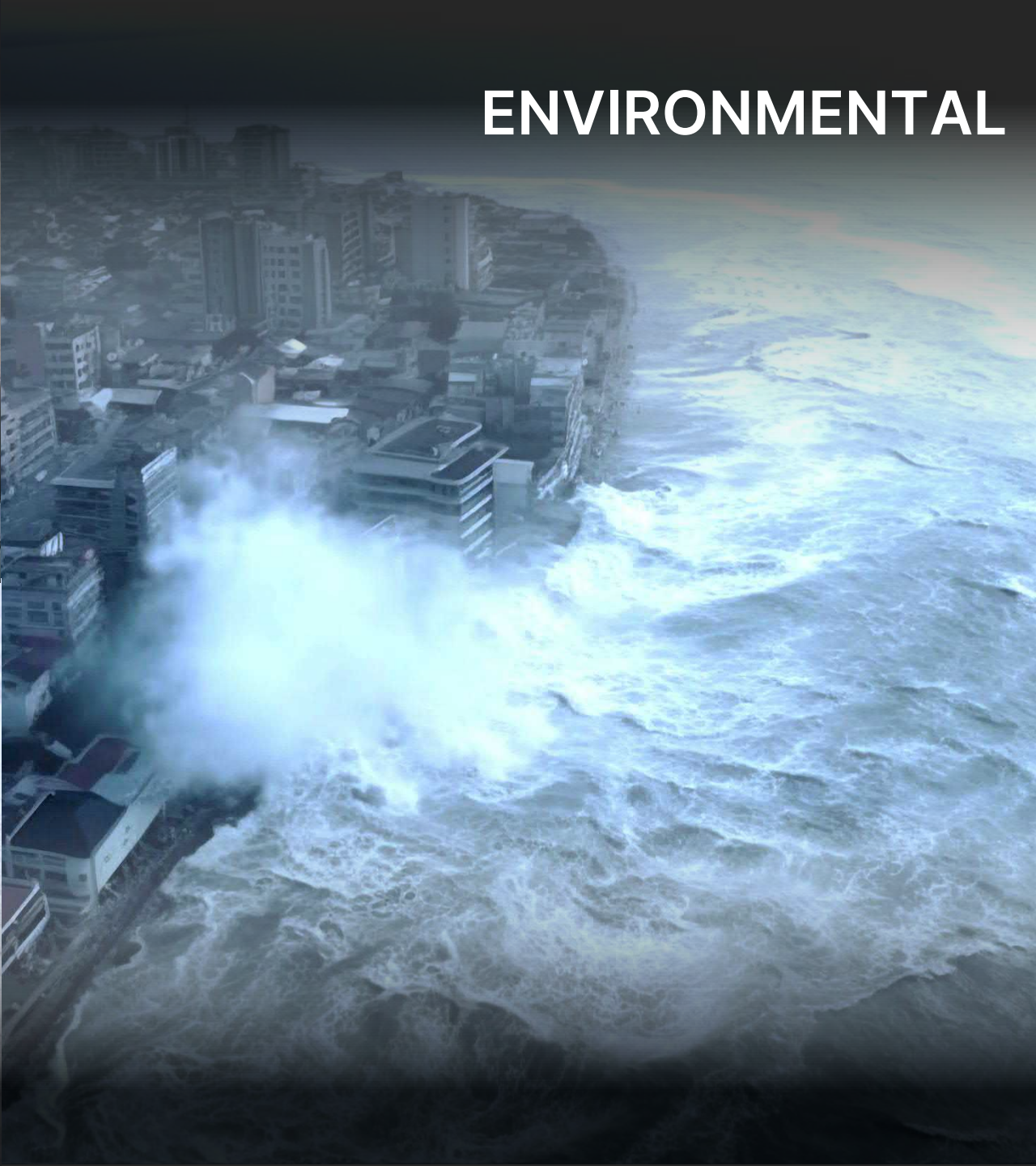
**CITIES**



RESILIENT  
**SOCIETY & ECONOMY**



**PERSONAL**



**ENVIRONMENTAL**



SUSTAINABLE  
**ENERGY**



**WATER**



**CARBON**



**WASTE**





- Semi-outdoor collaboration spaces
- High-performance glazing
- Clean energy provisions

## Sustainable



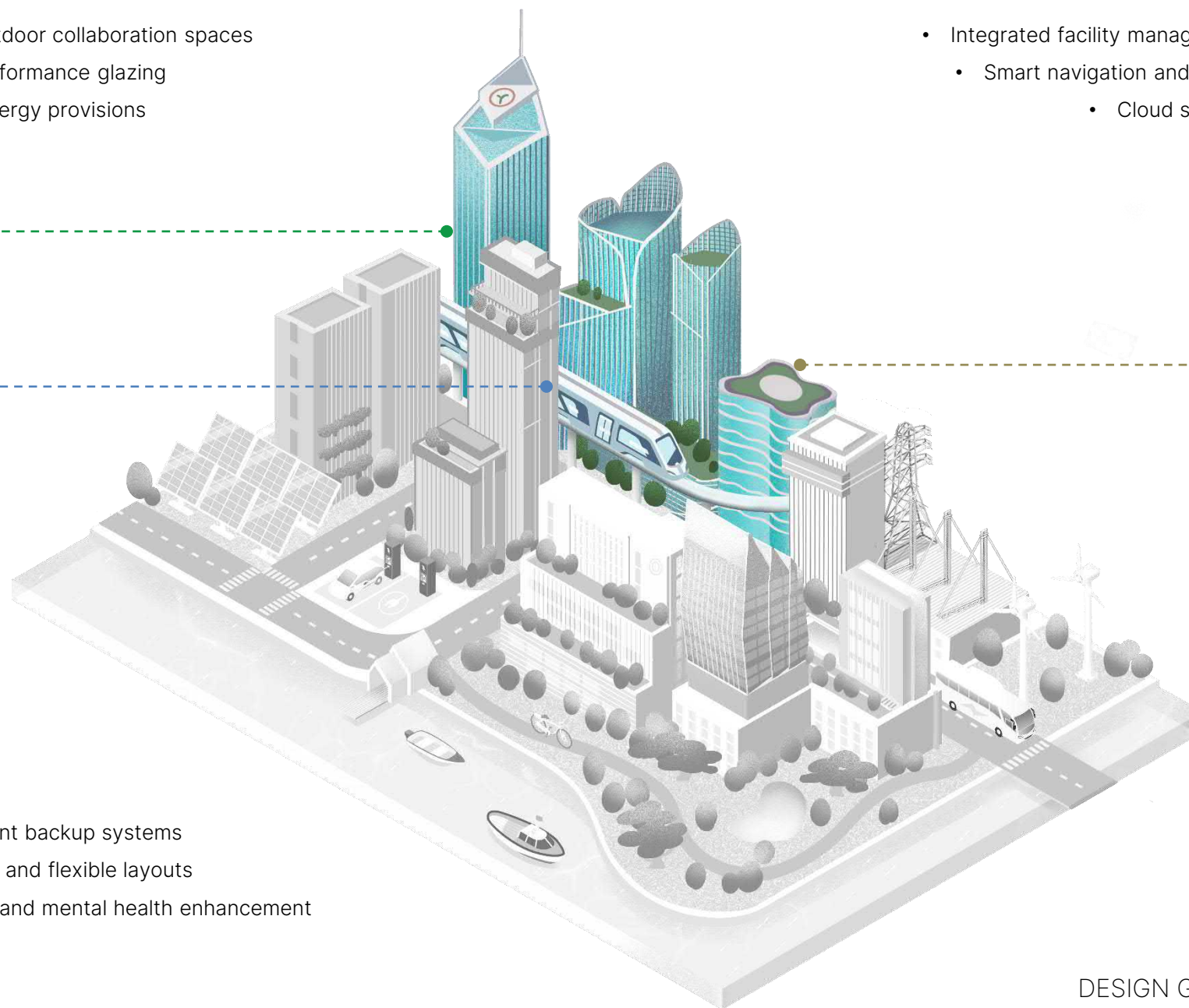
- Integrated facility management
  - Smart navigation and traffic
  - Cloud storage

## Intelligent



- Redundant backup systems
- Adaptive and flexible layouts
- Physical and mental health enhancement

## Resilient



# WORKPLACE

DESIGN GUIDELINES FOR INVESTORS



## Sustainable

- Breathable façades
- Shared amenity spaces
- Urban farming provisions

- Smart, secure and safe infrastructure
  - Teleworking support systems
  - Drones and robotic delivery

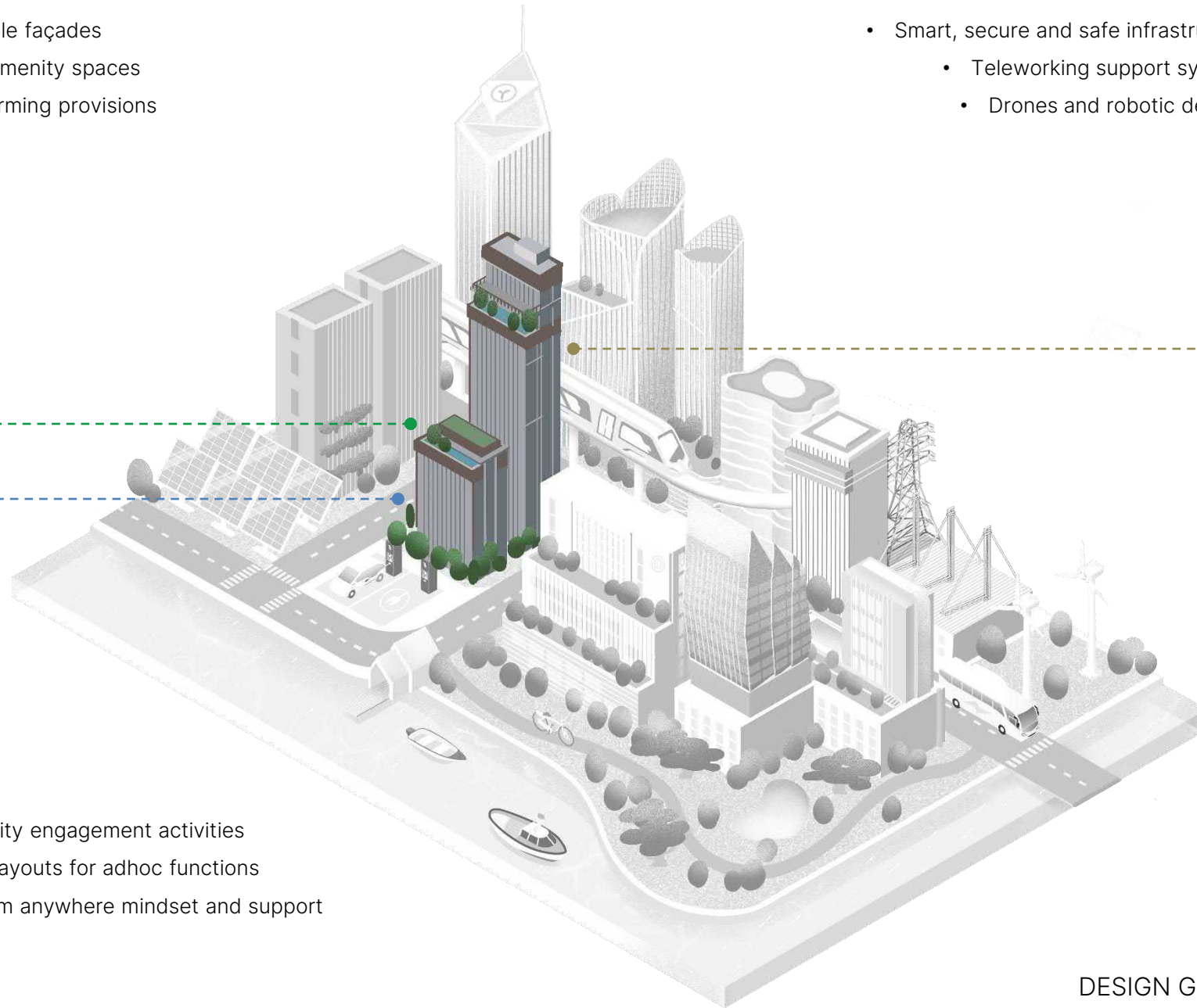


## Intelligent



## Resilient

- Community engagement activities
- Flexible layouts for adhoc functions
- Work from anywhere mindset and support



# RESIDENTIAL

DESIGN GUIDELINES FOR INVESTORS



## Sustainable

- Connection to nature and place
- Eco-branded materials with EPDs
- Robust waste and water management

- Stay with customized services and personalization
  - AR/VR tours and simulated experiences
  - Guest behavior data analytics

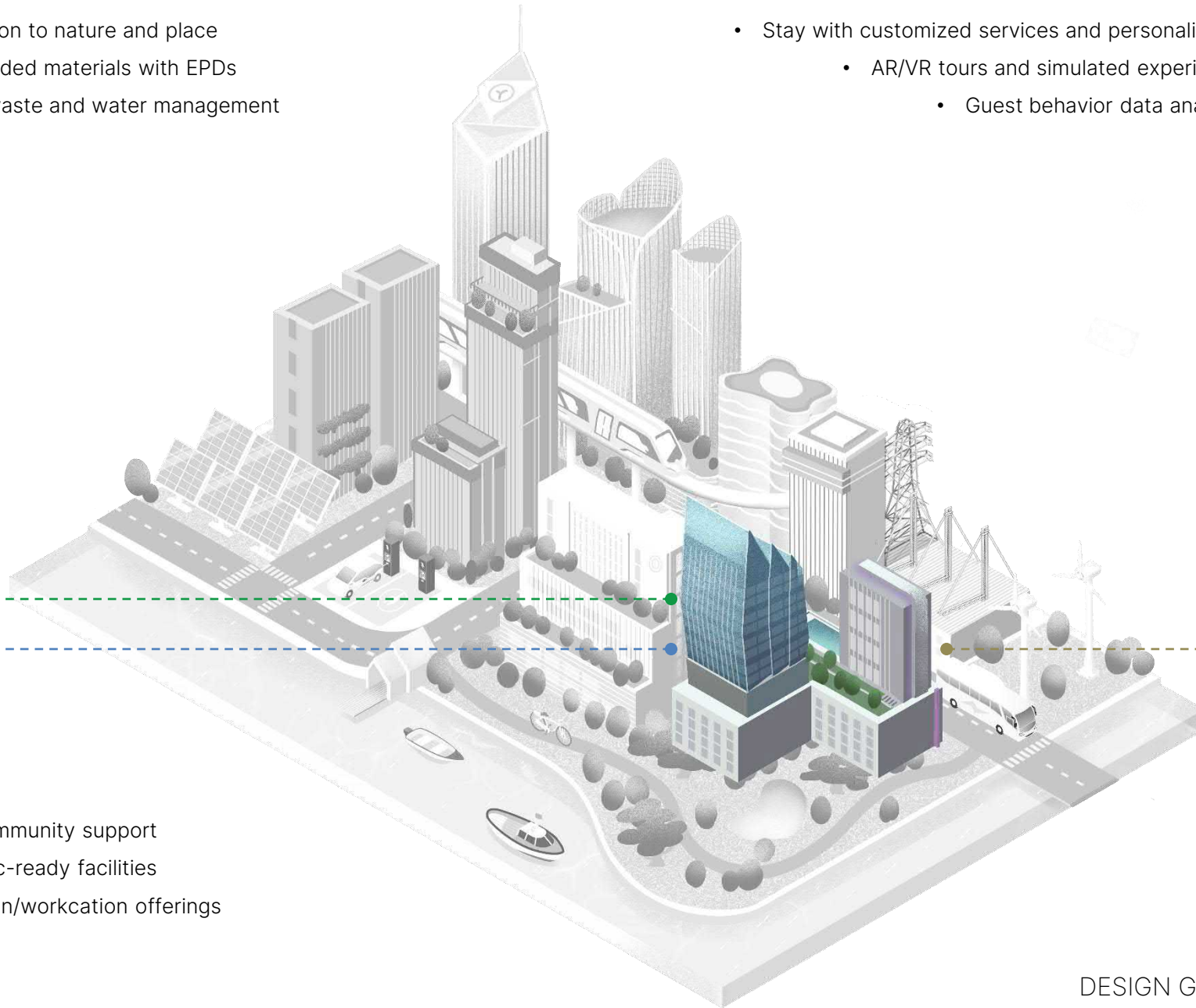


## Intelligent



## Resilient

- Local community support
- Pandemic-ready facilities
- Staycation/workcation offerings



# HOSPITALITY

DESIGN GUIDELINES FOR INVESTORS



## Sustainable

- Places of respite for patients and staff
- Direct access to outdoor gardens and terraces
- Enhanced acoustic performance and provisions

- Automated and contactless systems
  - Telehealth medical services
  - Wearables integration

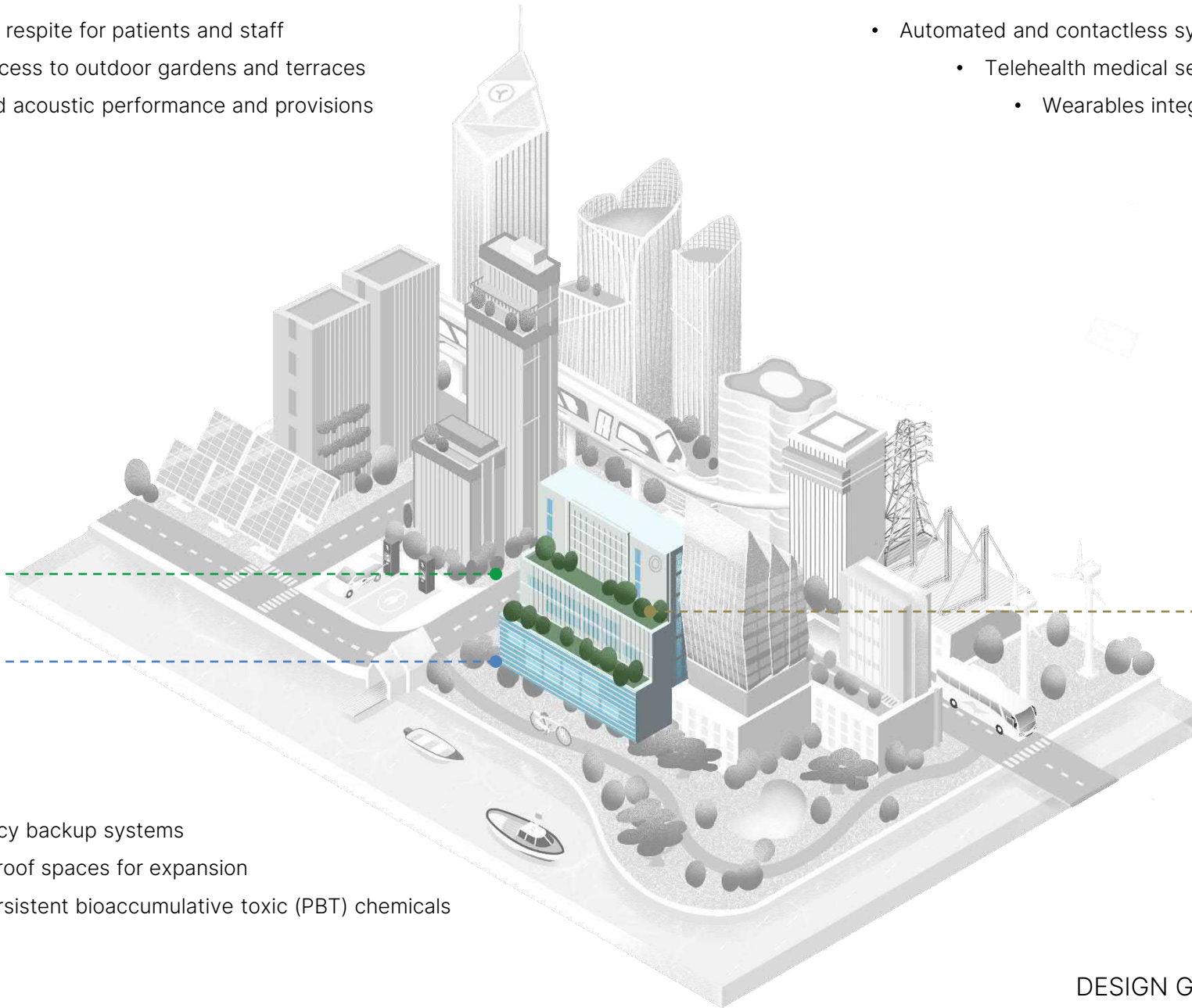


## Intelligent



## Resilient

- Emergency backup systems
- Future-proof spaces for expansion
- Avoid persistent bioaccumulative toxic (PBT) chemicals



# HEALTHCARE

DESIGN GUIDELINES FOR INVESTORS



**Sustainable**



**Resilient**

### ENERGY OPTIMIZATION

OPTIMIZE ENERGY USE AND CONSUMPTION

### CLIMATE POSITIVE

REMOVE CARBON DIOXIDE FROM THE ATMOSPHERE

### CYCLICAL WATER HARVESTING

COLLECT, FILTER, USE, RECYCLE, REUSE WATER

### GETTING TO ZERO WASTE

REDUCE WASTE TO LANDFILL

### SOCIO-ECONOMIC

COMMUNITIES AND SPACES

### ENVIRONMENTAL

CLIMATE CHANGE MITIGATION

### PERSONAL

PHYSICAL & MENTAL STABILITY

### MORE EFFICIENT BUILDINGS

HOLISTICALLY SOUND

### MORE INFORMED PEOPLE

ALL ROUNDED

### MORE RESPONSIVE CITIES

SEAMLESSLY CONNECTED



**Intelligent**



## THE DELIGHTFUL & WISE CITY

THE PLACE TO WORK, LIVE, STAY, AND GROW

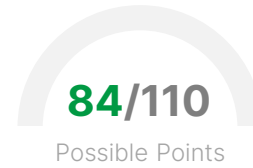


With our  
**Sustainability Expertise**

We create  
**Tangible Impacts**

Certified by  
**Leadership in Energy and  
Environmental Design (LEED)**





Certification Award:

**LEED v3 Certified PLATINUM**  
In New Construction Category

Top  
**3%**  
of all LEED v3  
Global activities

## Green Building Design Achievement:

- 36** % improvement on baseline building performance rating
- 7** % onsite renewable energy
- 20** % recycled content and regional building materials
- 75** % existing building structure and envelope reuse
- 40** % reduction in baseline indoor water use
- 90** % of occupied space has quality views



## SCG 100th Year Building



85/110

Possible Points

Certification Award:

**LEED v3 Certified PLATINUM**

In Core and Shell Category

Top

**4%**

of all LEED v3  
Global activities

### Green Building Design Achievement:

30 % improvement on baseline building performance rating

1 % onsite renewable energy (4 out of 4 credits)

35 % green power purchase

20 % recycled content and regional building materials

50 % FSC-certified wood products

40 % reduction in baseline indoor water use

90 % of occupied space has quality views



## SCG Head Office Building 1 and 2



**84/110**  
Possible Points

Certification Award:

**LEED v3 Certified PLATINUM**  
In Existing Building Category

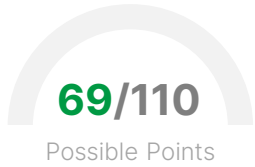
Top  
**4%**  
of all LEED v3  
Global activities

### Green Building Design Achievement:

- ✓ 95 Energy Star Performance Rating
- 80 % of total energy consumption is system-level metered
- 60 % sustainable purchasing of ongoing consumables
- 50 % of occupied space has daylighting and quality views
- 80 % reduction in indoor potable water use
- ✓ 'Exceptional' (14 out of 14 Possible LEED credits) in Water Efficiency



# One City Center



Certification Award:

**LEED v4 Certified GOLD**

In Core and Shell Category

Top  
**20%**  
of all LEED v4  
Global activities

## Green Building Design Achievement:

- 30 % of site area is dedicated to open space
- 21 % improvement on baseline energy performance
- 50 % reduction in baseline indoor & outdoor water use
- 75 % of the regular floor area receives both adequate daylight and quality views
- 5 % of all parking is reserved for green vehicles



# Singha Complex



**68/110**  
Possible Points

Certification Award:

**LEED v3 Certified GOLD**

In Core and Shell Category

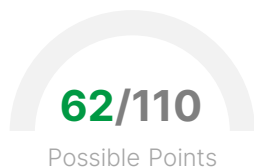
Top  
**24%**  
of all LEED v3  
Global activities

## Green Building Design Achievement:

- 28 % improvement on baseline building performance rating
- 20 % recycled content and regional building materials
- 20 % regionally extracted, harvested, recovered, or manufactured materials
- 40 % reduction in baseline indoor water use
- 50 % FSC-certified wood products
- ✓ focusing on load reduction and HVAC-related strategies



# PTT Operation Center (Tier IV)



Certification Award:

**LEED v3 Certified GOLD**

In New Construction Category

Top  
**41%**  
of all LEED v3  
Global activities

## Green Building Design Achievement:

- 16 % Improvement in energy cost-saving performance from the baseline
- 1 % onsite renewable energy
- 20 % recycled content building materials
- 90 % of occupied space has daylighting and quality views
- 40 % reduction in baseline indoor water use
- 80 'Exceptional' (14 out of 14 Possible LEED credits) in Water Efficiency
- ✓ Provide controllability of the lighting system for each individual task



We are dedicated to enhancing the  
quality of life  
**through our FITWEL projects**

APAC Tower (2023)  
Watthana, Bangkok

3-Star FITWEL Certified

*\*LEED Gold (pending review process)*

The logo for fitwel APAC, with 'fitwel' in blue and 'APAC' in orange, and 'E K T K A T M A T' in smaller text below.

promoting both physical and  
mental well-being through  
health-oriented features

One City Center (2023)  
Pathum Wan, Bangkok

*2-Star FITWEL Certified*





QSNCC

We believe in building a lasting future that is embedded with the commitment towards a net-zero world.

Embrace this future with us, today.



SCIENCE  
BASED  
TARGETS

DRIVING AMBITIOUS CORPORATE CLIMATE ACTION



\*D103i has committed to set near-term company-wide emission reductions in line with climate science with the Science Based Targets initiative (SBTi) by 2030.

A LOOK AT  
**OUR WORK**

An aerial night-time architectural rendering of a large airport terminal. The terminal is a long, curved structure with a translucent, blue-tinted roof that glows from within. Numerous jet bridges extend from the terminal to various gates. Dozens of commercial aircraft are parked at the gates or taxiing on the tarmac. The surrounding area includes roads, parking lots, and some greenery, all illuminated by the airport's lights.

# AVIATION & TRANSPORTATION



SUVARNABHUMI AIRPORT SATELLITE TERMINAL 1



SAMUI AIRPORT



PHUKET INTERNATIONAL AIRPORT



X TERMINAL PHUKET INTERNATIONAL AIRPORT



REGIONAL AIRPORTS MASTER PLAN STUDY-PHUKET



REGIONAL AIRPORTS MASTER PLAN STUDY-CHIANG MAI



REGIONAL AIRPORTS MASTER PLAN STUDY-HAT YAI



REGIONAL AIRPORTS MASTER PLAN STUDY-CHIANG RAI



MASTER PLAN OF SUVARNABHUMI AIRPORT



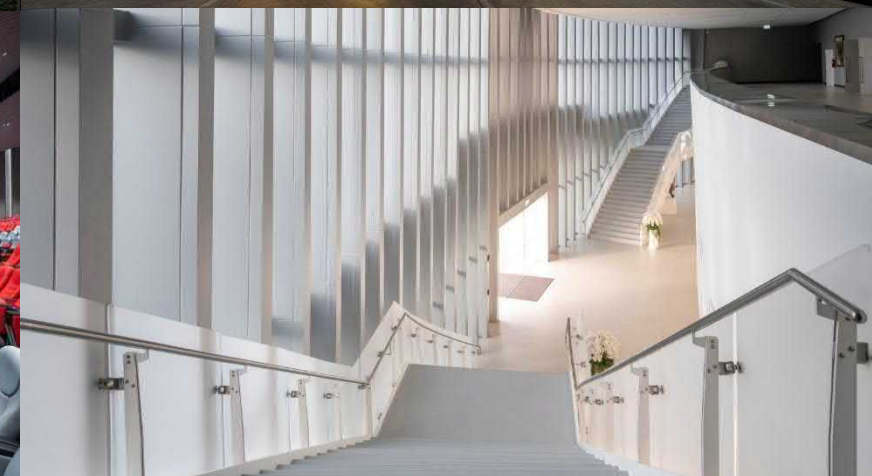
**CONVENTION CENTERS**



QUEEN SIRIKIT NATIONAL CONVENTION CENTER (QSNCC) (1991 and 2022)



KASIKORN BANK AUDITORIUM



NAVY HALL



KHON KAEN INTERNATIONAL  
CONVENTION AND EXHIBITION CENTER



BANGKOK INTERNATIONAL TRADE & EXHIBITION  
CENTER



**DATA CENTERS**



UOB OPERATION CENTER (TIER IV)



PTT DATA CENTER (TIER IV)



PTT GAS PIPELINE CONTROL CENTER (TIER IV)



BANGKOK LIFE ASSURANCE PCL'S HEAD OFFICE (TIER II)



GOVERNMENT SAVING BANK DATA CENTER (TIER III)



KASIKORN BANK CHAENGWATTHANA (TIER III)



EXAT HEADQUARTERS (TIER II)



NEW THAI TOBACCO FACTORY (TIER II)



KASIKORN BANK RATBURANA HEAD OFFICE (TIER III)



**EDUCATION**



BRITISH INTERNATIONAL SCHOOL YANGON



THAI RED CROSS NURSING COLLEGE



THE INTERNATIONAL SCHOOL AT RAMA 3 RD



NATIONAL PRIMATE RESEARCH CENTER OF THAILAND



UNIVERSITY OF THAI CHAMBER OF COMMERCE



EDUCATION COLLEGE IN THE REPUBLIC OF UNION OF MYANMAR



LABORATORY & TESTING FACILITY BUILDINGS AT THE TECHNOLOGICAL UNIVERSITY



# EXPO & EXHIBITION PAVILIONS



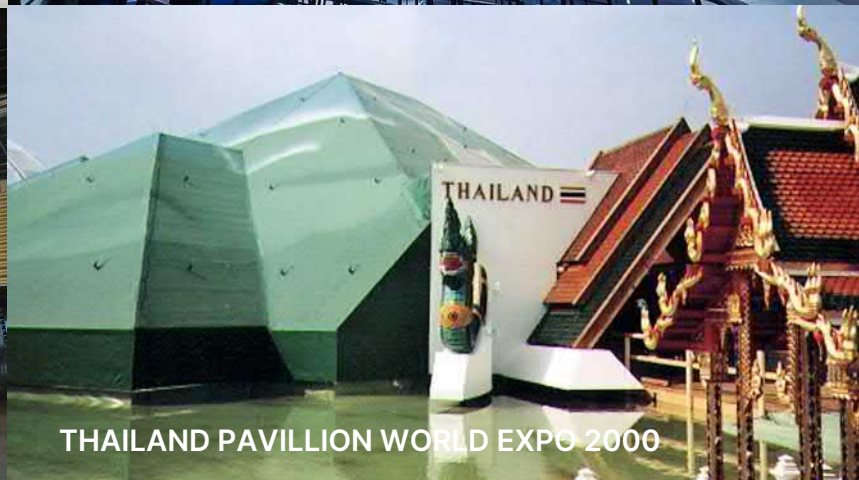
THAILAND PAVILLION WORLD EXPO 2020



THAILAND PAVILLION WORLD EXPO 2017



THAILAND PAVILLION WORLD EXPO 2012



THAILAND PAVILLION WORLD EXPO 2000



THAILAND PAVILLION WORLD EXPO 2010





GOVERNMENT



NAVY HALL & PARKING BUILDING



NAVAL PUBLIC WORKS DEPARTMENT OFFICE



THAI RED CROSS NURSING COLLEGE



SUVARNABHUMI AIRPORT SATELLITE TERMINAL 1



PHUKET INTERNATIONAL EXHIBITION  
& CONVENTION CENTER



SIRIRAJ BIMUKSTHAN MUSEUM



SIRIRAJ HOSPITAL AND RAIL STATION



HEALTHCARE



BUMRUNGRAD INTERNATIONAL  
PETCHABURI CAMPUS HOSPITAL



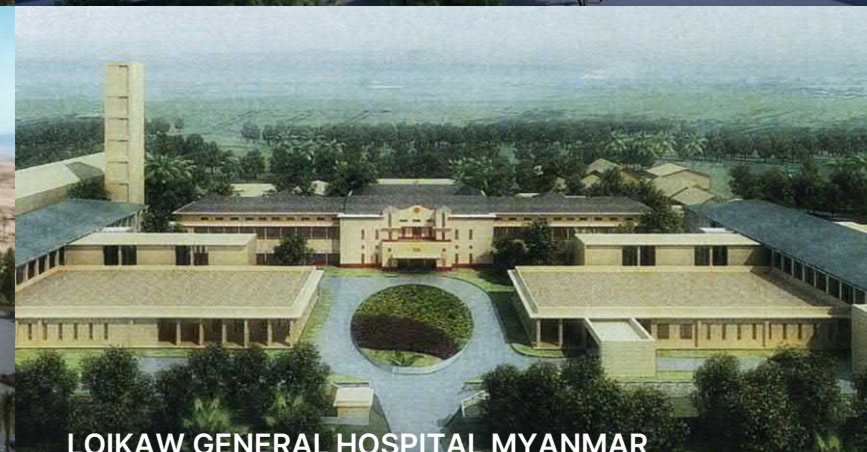
SIRIRAJ HOSPITAL AND RAIL STATION



BUMRUNGRAD INTERNATIONAL HOSPITAL  
(OUTPATIENTS CLINIC)



IRAQ HEALTH SECTOR



LOIKAW GENERAL HOSPITAL MYANMAR



**HOSPITALITY**



FOUR SEASONS HOTEL



PLATINUM M1: HOTEL



LE MERIDIEN BANGKOK



VOCO SUKHUMVIT 11



PTT TRAINING CENTER



THATENG RESORT AND SPA



HOLIDAY INN PATTAYA HOTEL



CENTARA RESORT LUANG PRABANG



CENTARA GRAND LUANG PRABANG



**MASTER PLAN**



ONE PHNOM PENH MASTER PLAN



WANG NOI MASTER PLAN



INLE TOURIST PARK



HUE TOURIST MARKET



BOTAHTAUNG RIVERFRONT DEVELOPMENT



BATU KAWAN MASTER PLAN



ORIENTAL FARMING RESORT AND TOURIST HUB



WORLD CITY MASTER PLAN



HEMMINGWAY CUBA



**MIXED-USE**



BANGKOK MALL



PLATINUM M1



SINGHA HEADQUARTERS



EKKAMA MIXED USE



EM QUARTIER & BHIRAJ TOWER



HH MIXED-USE DEVELOPMENT PENANG



PALM JABEL ALI



MEDINA CENTRALE



IVORY TIMES SQUARE DEVELOPMENT



OFFICE



ONE CITY CENTER



PLATINUM M2



EKAMAI MIXED USE



EXAT HEADQUARTERS



PRIMO POSTO



BANGKOK LIFE ASSURANCE



SCC HEADQUARTERS 3



SC TOWER



COM 7 HEADQUARTERS

**RESIDENTIAL**



YANGON TRIPLE



28 CHIDLOM CONDOMINIUM



THE ARDMORE 38



ARTISAN RATCHADA



ASPEN VISION CITY PENANG



THE COVE PATTAYA



RIVERSIDE CONDOMINIUM



SOHO CONDOMINIUM PENANG



THE WAVE



RETAIL CENTERS



ONE BANGKOK R1



BANGKOK MALL



SIAM PARAGON HALL



EM QUARTIER



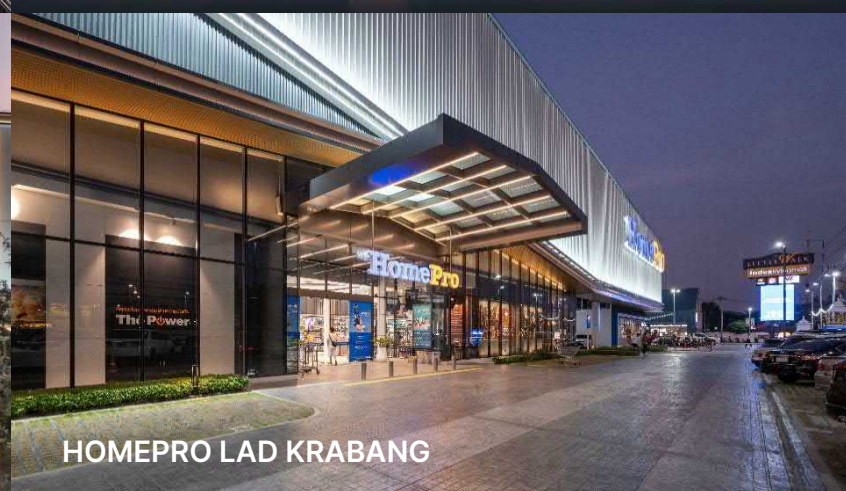
EM SPHERE



EMPORIUM FAÇADE RENOVATION



HOMEPRO BANGNA



HOMEPRO LAD KRABANG



HOMEPRO SUK SAWAD



INDUSTRIAL



MITR PHOL SUGAR PLANT



NEW THAI TOBACCO FACTORY



HEINEKEN BEER BREWERY



OSOTSAPA ROJANA INDUSTRIAL PARK



SINGHA DISTRIBUTION CENTER



THAI BEVERAGE DISTRIBUTION CENTER



WAREHOUSE KRUNGDHEP DOCUMENT



WESTERN DIGITAL WAREHOUSE



THE THIRD ROYAL FACTORY AT TAO NGOI

“We **integrate innovative** designs to **inspire** you”



ia103

CRH

CONSTRUCTION, INFRASTRUCTURE, MATERIALS